

# PROGRAMME

SUDBURY PERFORMANCE GROUP

— *Be a Part of the Art* —



Rudolph the Red-Nosed Reindeer JR.

Is presented through special arrangement with Music Theatre International (MTI).

All authorized performance materials are also supplied by MTI.

[www.mtishows.com](http://www.mtishows.com)

Sudbury Performance Group's Production of



**Music & Lyrics** by Johnny Marks

**Script Adaptation** by Robert Penola

**Arrangements** by Timothy Splain

**Orchestrations** by William C. White

**Based on the animated television special "Rudolph the Red-Nosed Reindeer" adapted from the story by Robert L. May and the song by Johnny Marks.**

**Developed by Character Arts Creations, LLC**

---

**Director** – Mark Mannisto | **Stage Manager** – Tara Hawkes

**Choreographers** – Lindsay Dainton + Tara Hawkes

**Set Construction** – Brian and Stephanie Armstrong

**Set Painting/Decoration** – Lindsay Dainton, Libby Michie, Tara Hawkes

**Props** – Tara Hawkes, Maija McCahery, Daphne Gibson

**Costumes** – Kathleen Foster + Caitlin Drohan

**Audio Operation** – Sean Perras + Amy Wilson

**Lighting Design** – Andre Labelle | **Spotlight Operation** – Elina Jillings

**Assistant Stage Managers** – Macayla Dupuis, Daphne Gibson, Ash Banton, Alison Buckner, Alicia Doiron, Tina Eddy Lafortune, Samantha Blake, Tanya Saari

**Cast Photography + Videography** – Leo Duquette

**Program Editor** – Tanya Saari | **Graphic Designer** – Tara Hawkes

**FOH Coordinator** – Chanda Grylls-Mahaffy | **FOH Manager** – Lyanne Young

**Local Maker** – Miss Melissa's Things

**A special thank you to all the parents and volunteers that have helped make this production a reality. Your support means the world.**



Canadian  
Heritage

Patrimoine  
canadien



Delta  
DRUG-GAMING



ONTARIO ARTS COUNCIL  
CONSEIL DES ARTS DE L'ONTARIO  
an Ontario government agency  
un organisme du gouvernement de l'Ontario

Ontario

sudbury.com

THE  
SUDBURY STAR

Greater Sudbury



## MARK MANNISTO - DIRECTOR

It's the most wonderful time of the year!

*Rudolph...* has been a very special production for me. Not only have I been able to re-live the magic of this fantastic Christmas tale that, once upon a time, my mother would make sure that I never missed when it aired on TV back when Christmas was as magical as silver and gold Christmas trees, but it has given me the opportunity to work with over two dozen young (and young-at-heart) performers that have kept me on my toes since mid-September. The enthusiasm of all the performers has really warmed my heart and rekindled my love for Rudolph, the Misfits, and all of Santa's Elves.

As much as I enjoyed working with the young-at-heart in this production, it really is the kids that made this production special for me. The energy, the laughs, the silly rehearsals, and the belief in the true meaning of Christmas had rekindled my love for the holiday season. I would work with any of these youngsters again in a heartbeat! They are all superstars in my book! They are such a joy to work with. It makes me want to continue to offer more and more programming for our young artists!

Special thanks go out to the team that that has helped keep the cast engaged, in order, and full of Christmas cheer. Emily, Lindsay, Tara, I thank you all from the bottom of my heart!

I want everyone who is watching the show today to remember that even though we may feel, from time to time, that we may be a misfit and not fit in with the rest of the crowd that it is THAT that makes you special. You never know, one day YOU might be the one guiding Santa's sleigh. Be as misfit as you want. Let your nose glow bright!

Merry Christmas from me, to you!

**Mark Mannisto, President**  
Sudbury Performance Group



Sudbury Performance Group would love for you to "be a part of the art"! Volunteer with us!

# VOLUNTEERS NEEDED

**SUBMIT A VOLUNTEER APPLICATION FORM**



## TARA HAWKES

### STAGE MANAGER/CO-CHOREOGRAPHER

This self-proclaimed misfit toy is absolutely thrilled to have jumped on board for *Rudolph!* 1964's stop-motion television special has been Tara's ultimate favourite since she can remember. Captivated by the narration of Burl Ives and the joy of Christmas, she can't fully express her love for the season. #It'sMagic. Adding to that magical feeling is this incredible cast. If asked, Tara is always quick to say that children (and dogs) are her favourite people! So, she feels extremely lucky to have spent three months with so many eager, witty, and talented young individuals. Taking on the dual role of stage manager and co-choreographer is a rather large undertaking, to say the least, but it was a "challenge accepted" scenario for Tara. She wants to thank all the parents for being so kind and patient during this process, and entrusting our team with your little characters! It's been a pleasure. A special shout-out to the cast's adults, too! Your talent and dedication to helping our first timers is greatly admired and appreciated. Tara wants to thank Kathleen and Caitlin for all the costume magic (wow), Lindsay for being her creative choreo partner, Emily for her dedication in her debut as vocal director, and Mark for steering this theatrical ship once again! Oh, what fun it is! Enjoy, all!

## EMILY DUVAL VOCAL DIRECTOR

Emily may be a relative newcomer to the SPG family who's only been on board since the *ABBA Gold* production, but she's delighted to have the honour of being a vocal director for the first time! As a graduate of Cambrian College's music program, she is already accustomed to dissecting harmonies, while her day job as a piano teacher has (at least somewhat) prepared her to work with a room full of excitable kids. Emily is proud of all the hours the cast and crew have put in to ensure the show's success, especially the volunteers working hard behind the scenes. She hopes you enjoy the show – and beware of the Bumble!



## LINDSAY DAINTON CO-CHOREOGRAPHER/ BUMBLE, TRAIN (MISFIT), DEER/YEARLING

This is Lindsay's second Christmas production with SPG. She played Snoopy in last year's production of *A Charlie Brown Christmas*, and here she is again, playing Bumble. It has been such a joy to work with these talented youngsters. She is very proud of everyone, and their growth from the time they auditioned to closing night. This is a special performance for her, and she would like to dedicate the run to her nieces, Charlotte and Chloe. Enjoy the show, and remember, Bumbles bounce!



MĀIJĀ



DIVINA



ADRIENNE



ANTONIO



THOMAS



CAITLIN



GEORGIA



KEAGEN



KAIZLEE



SOPHIE



SATINE



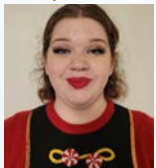
ETHAN



IVY



RL



MARGARET



ILIA



TANNER



ARIA



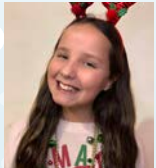
ARY



DĀMĀRA



EMILY



HAYDEN



ABBY



ELAYNA



LAUREN



ABIGAIL



MARIA



NORA



CLAIRE



DĀREANE



# MEET THE CAST



## MĀIJĀ MCCĀHERY - SĀM

This is Māija's 3<sup>rd</sup> performance in Sudbury, since moving from Mount Forest, Ontario, in March of 2022. Originally born in Sudbury, she moved away at seven years of age, and has now returned as an adult. She renewed her love of theatre in 2015, when she joined the Grey Wellington Theatre Guild in Harriston, Ontario, as a performer and a board member. She has performed in over six community performances pre-Covid, and is back at it again and loving the connection with the vast arts community in Sudbury. When not on stage, Māija is interacting with Sudbury's senior population as the Sales and Marketing Director of Sudbury Retirement Manor, in Minnow Lake. She loves performing and entertaining seniors and families, by sharing information and education regarding their future options for a retirement lifestyle. This has been another passion for Māija, having worked in the retirement industry for over seven years. In addition, she spends her free time volunteering and supporting other performances, at the front of house for Sudbury Performance Group. She is very grateful for another opportunity to participate in this classic children's story, and feels honoured to be cast as Sam.



## DIVINA DIAS - RUDOLPH 1, PLANE (MISFIT), SEED-PUPPY

Divina is 9 years old and super excited to be a part of *Rudolph*! She heard about Sudbury Performance Group's Summer Theatre Camp and decided to join with her friend! She enrolled for 2 weeks, and that quickly became 6 weeks when she discovered her love for theatre! That's how much she enjoyed herself! Divina hopes you enjoy the show!

## ADRIENNE YOUNG - RUDOLPH 2

Adrienne is thrilled to be a part of this production, and is playing the role of *Rudolph*. She is 13 years old, and has a passion for singing and theatre. Adrienne is no stranger to the stage, as she has performed in numerous shows with multiple theatre groups around the city of Sudbury since the age of nine. Most recently, she played Mary Warren in Arthur Miller's *The Crucible* with Porchlight Theatre Company and Sudbury Performance Group. She is grateful to all her friends and family for their love and support, and would like to thank Sudbury Performance Group for this opportunity. Enjoy the show!

## ANTONIO MOREIRA - HERMEY

Antonio is 13 years old, and in grade eight. He performed in *The Jungle Book, Jr.*, this past summer, with SPG's Youth Theatre Camp. Surprisingly, he loved it, as it was something new to him, so when he heard there was a Christmas play in December called *Rudolph the Red-Nosed Reindeer*, he automatically auditioned for the play, and received a part. He is excited to play Hermey, the misfit elf. Since he has always had a passion for music, this play sounded super to him. Everyone in this group is amazing and inspiring.



## THOMAS STEWART - SANTA

This is Tom's 13<sup>th</sup> performance with the Sudbury Performance Group. This show reminds him of his childhood, as *Rudolph* was one of his favourite Christmas shows. This is the second time he has had the honour of playing Santa Claus. Yes, the beard is real! The production crew worked incredibly hard in difficult times to help make this show all that it could be, and to have the cast all ready to go. Lastly, Tom would like to thank his family for again allowing him to be absent from them, so he can continue to follow his passion. Be a Part of the Art!

## CAITLIN DROHAN - MRS. CLAU

Caitlin made her Sudbury debut in September, portraying Susanna Walcott in *The Crucible*, with Porchlight Theatre Company in partnership with SPG. Her most recent role was stage managing SPG's *ABBA Gold* production. She was previously in *Suessical the Musical*, and *Cinderella*, and played the role of Audrey 2 in *Little Shop of Horrors* at New Star Theatre Company in Ottawa. Caitlin assisted with makeup and costumes for *The Little Mermaid* and *The Wizard of Oz* with NSAA, located in Kingston.

## GEORGIA MITCHELL - CLARICE

Georgia is a Grade five student at R.L. Beattie Public School, making her theatrical debut. Hailing from Sudbury, Ontario, Georgia's love for acting blossomed through numerous theater-based PD Day and Summer Camps. A skilled gymnast and aerialist, Georgia dreams of a future in acting. Along with academics, she balances school plays, and a flair for arts like painting, with cooking, and crocheting adorable stuffed animals. Georgia is thrilled to be participating in her first production!





## KEAGAN DUROCHER - YUKON

Thrilled to join Sudbury Performance Group once again, Keagen brings a wealth of experience, having graced the stage in a handful of past SPG productions such as *RENT*, *All Together Now*, and *The Rocky Horror Show*. With a passion for quirky characters, Keagen eagerly steps into the role of Yukon Cornelius for *Rudolph*! Don't miss the chance to witness Keagen infuse this festive tale with charisma and a touch of in-spire-ation! Enjoy the show!

## KAIZLEE DOIRON - MRS. DONNER, CHARLIE-IN-THE-BOX (MISFIT), REPORTER

Kaizlee is a 14-year-old, grade nine student, who enjoys reading, singing, spending time with friends, and sleeping. Kaizlee has previously participated in *Footloose*, and *Bye Bye Birdie*, the choir for *Joseph and the Technicolor Dream Coat*, the ensemble in *A Charlie Brown Christmas*, and acting classes with STC. She is excited to be taking part in this year's production of *Rudolph* with such an amazing cast, and she hopes you all enjoy the show as much as she enjoys being in it.

## SOPHIE HALL - BOSS ELF

Sophie is so excited to be part of SPG's *Rudolph the Red-Nosed Reindeer*! This will be Sophie's third performance with SPG, as she performed in SPG's summer camp musical, *Heroes and Villains*, as well as in *A Charlie Brown Christmas*. This is a very exciting experience for Sophie, and she is thrilled to be playing Boss Elf. She would like to thank her family for always supporting her, and Mark, Angel, Tara, Lindsay, and Emily for being so encouraging. She hopes you enjoy the show!

## SATINE STANFIELD - FIREBALL, ELEPHANT (MISFIT)

Satine is excited to make her stage debut as Fireball & Spotted Elephant in *Rudolph the Red-Nosed Reindeer*! She assistant-stage-managed both of SPG's *ABBA Gold*, and *Perfect Wedding* productions, so she is beyond thrilled that she finally gets her chance to emerge from behind the curtain! She would like to thank everyone involved with the show: the cast, crew, and of course, the audience! A Holly Jolly Christmas to you all!

## ETHAN WINN-AUBREY - COACH COMET, COWBOY (MISFIT)

Ethan is excited to play Coach Comet. Ethan is 13 years old, and is in grade eight at Bishop Alexander Carter. He has been part of the Sudbury Young Performers for a couple of years now. Ethan started his interest in theatre during the Sudbury Young Performers summer program, with a role in *The Grinch Who Stole Christmas*. Continuing to follow his new love for theatre, Ethan was part of the cast of *A Charlie Brown Christmas* in last year's production with SPG. Ethan is also very passionate for football, and is currently a line backer with our local Joe Macdonald League. Ethan is very grateful to be a part of this year's production, and encourages anyone thinking of trying theatre to always follow your dreams.



## IVY THERRIEN - ENSEMBLE (ELF, SEED-PUPPY)

This is Ivy's first musical production with Sudbury Performance Group. She is enjoying the singing and dancing. Ivy loves to keep busy doing art and playing with her friends, and watching movies with her family.



## RL BANTON - KING MOON-RACER, ELF #3

RL (Robert Lee) is happy to be part of the magic in his first SPG production. RL says "It's fun being a part of a musical." Being involved in *Rudolph* as King Moonracer and an elf, RL is experiencing "the spark of imagination". RL is a grade five student, who has been enjoying musical theatre since a young age. He saw his first Toronto show at the age of five. He is newer to Sudbury, and enjoys climbing the many rocks in the area. He also enjoys reading, playing video games, and playing outside. He has been a student in the STC Discovery Drama classes, and has enjoyed being a part of his class' Fractured Fairy Tales. RL also plays piano and does trampoline gymnastics. RL wants to thank his director and stage manager for giving him this opportunity. He would also like to thank all the cast and crew for their dedication and hard work.

## MARGARET KÄMERMAN - CLARICE'S MOTHER, DEER/YEARLING, MISFIT TOY

Margaret is very excited to be a part of *Rudolph!* This is Margaret's first production with Sudbury Performance Group, and she is excited to share her singing expertise on the stage in this wonderful production. Margaret was raised in Parry Sound, and began singing at an early age. She recently moved back to Sudbury, after completing her bachelor's degree in music from The Faculty of Music at Wilfred Laurier University in Waterloo. During her studies, she got the opportunity to perform with the Kitchener-Waterloo Symphony as part of the chorus for a concert production of Verdi's *La Traviata*, and played the role of Beth March in Opera Laurier's production of Mark Adamo's *Little Women*. When not on the stage, Margaret works as a Mary Kay beauty consultant. She also enjoys reading, photography, traveling, and spending time with family and friends.




## LILLIA CHÄLUT - DOLLY (MISFIT), ELF #1

Lillia is excited to be part of the cast of *Rudolph the Red-Nosed Reindeer*. This is Lillia's first production, and she is so happy to be playing the roles of Dolly and Elf 1. She has enjoyed getting to know the cast, and learning the choreography. Lillia is in grade seven, and enjoys playing volleyball, and playing the piano. She would like to thank the cast and crew for all the amazing fun. Lillia hopes you enjoy the show, and wishes you a Merry Christmas.



## TANNER OUELETTE-ARMSTRONG - DONNER

Tanner is excited to join the cast of *Rudolph* as Donner/ Rudolph's dad. Since Tanner was a little boy, he had a tremendous passion for acting and singing, and he has always loved being able to entertain crowds. He joined his school's choir, where they sang at numerous community events (such as the tree lighting in Walden, and performing our national anthem at the Sudbury Wolves games). Tanner has graced the stage on several occasions, including a lead role as Sphen in a school production called *The Adventures of Sparkling Red and Wonder Sphen*, as well as the applause sign prompt runner in *The Liars Club*, written and directed by Linda Morgan. Tanner loves spending time with family and friends, and shares his talent for storytelling with everyone who has an ear to lend. Tanner is very excited to take on this new opportunity, and looks forward to the future in pursuing his passion for acting and performing.



## ARIA ROCHON - ELF #2, AVIATOR ELF

Aria is delighted to be an elf in the ensemble for *Rudolph the Red-Nosed Reindeer*. This is her second production with SPG. She was also part of *A Charlie Brown Christmas* last season. Aria is a grade three student, with a passion for the arts. She has been dancing since she was two years old, and is in her third year of competitive at Dance Evolution. She hopes everyone enjoys the show, and has a wonderful Christmas. She also hopes Rudolph eats the naughty list!



## ARY DUONG - ENSEMBLE (ANIMAL, VIXEN, REPORTER)

Ary cannot wait to be a part of a musical for the first time! They are a Grade 12 vocal major at Sudbury Secondary School, participating in many extracurriculars, such as band, choir, and student parliament. Outside of school, they're the Vice-Chair of the RDSB student senate, and a member of Future North's Youth Expert Panel. They are very new to the theatre community, their first role being Tituba in *The Crucible*. Learning the stage-managing ropes, Ary is currently involved with STC's *Matilda*, and SPG's upcoming dinner theatre *The Miss Magnolia Senior Citizen Beauty Pageant*. Ary loves being so involved with theatre. They welcome you to *Rudolph the Red-Nosed Reindeer*, and hope you enjoy the magic of Christmas!

## DAMARA MOXAM - ENSEMBLE (ANIMAL, CUPID, REPORTER)

Damara is excited to be part of the cast of *Rudolph the Red-Nosed Reindeer*. They are one of the ensemble, playing multiple roles, including the main reindeer, Cupid. They are excited to perform with SPG for their first performance! Damara has lived in the Sudbury area their whole life, singing and playing instruments for as long as they can remember. They enjoy singing and playing instruments, especially guitar and ukulele.

## EMILY POULIN - ENSEMBLE (DEER/YEARLING, E[F])

Emily is a talented 10-year-old, with a passion for acting that blossomed two years ago at Sudbury Performance Group's summer camps. This marks her debut in theatre, and she brings a natural flair for performance. Beyond the stage, Emily finds joy in traveling, swimming, acting in front of the camera, and creating magical moments. When not pursuing her acting dreams, you'll find her cozying up with her beloved cat, Rambo.

## HAYDEN GINSEN - ENSEMBLE (ANIMAL, DANCER, REPORTER)

Hayden is thrilled for her first production with SPG! Hayden is nine years old, and has loved performing ever since she knew she could grab people's attention with her singing, acting, and dancing. Hayden is a competitive dancer with Spotlight Dance Company, and loves all styles of dance. She is presently learning Ballet, Tap, Acro, Jazz, Lyrical, Hip-Hop, and Musical Theatre. Hayden also trains at That Creative Loft, learning all things acting and modeling.

## ABBY BUCKNER - ENSEMBLE (BIRD-FISH MISFIT, DEER/YEARLING)

Abby is excited to be part of *Rudolph*, playing the roles of Bird-Fish, a member of the misfit toys, and young Dancer. Abby is nine years old, and this is her first production with Sudbury Performance Group. Abby is excited to share her love of singing, dancing, and acting on stage with this holiday show. Abby discovered her love of theatre while attending the summer camps offered through Sudbury Performance Group.

## ELAYNA SKRABA - ENSEMBLE (DEER/YEARLING, BITZEN)

Elayna is excited to be a part of her first Sudbury Performance Group production. She is a ninth-grade student from Marymount Academy that loves musical theatre. Elayna got her start on stage as Young Nala, in *The Lion King, Jr.* when she was only 10 years old, and hasn't stopped performing since. Some of her other roles have been Young Elsa in *Frozen, Jr.*, Ursula in *The Little Mermaid, Jr.*, and The Ugly Duckling in *Pure Imagination*. Elayna hopes to share her love of performing and singing for many more years to come.



## LAUREN BERUBE - ENSEMBLE (DEER/YEARLING, ELF)

Lauren is elated to be cast in *Rudolph the Red-Nosed Reindeer*! She is a vivacious, positive, high-energy, almost-eight-year-old. Lauren is no stranger to the stage, as she is currently in her fifth year of dance. She also took part in the two-week, summer musical theatre camp production of *Mean Girls, Jr.*, put on by Sudbury Performance Group. When she is not dancing and singing, you can find her reading, painting, or playing her ukelele.

## ABIGAIL YAW - ENSEMBLE (ELF #4, ANIMAL REPORTER, DASHER)

Abigail is a twelve-year-old, French-Canadian. She is very excited to be joining SPG in this production of *Rudolph*! Her love for the art of performing began at a very young age. She would prepare and present short plays, and sing and dance for family and friends. She has taken on several roles in class plays for her primary school, including roles in *Cinderella*, as well as a principal dancer for a competition (Folie Furieuse). This passion has led her to pursue formal acting training (2022). She has recently signed with The Nexus Talent Group. Abigail is known for her role in the upcoming movie *Magnetsphere*. During her free time, she loves to hang out with her pets, and crafting and doing sports. She is very active on all of the sports teams at school, her favorites being basketball and volleyball. Abigail looks forward to continuing and expanding her talent, and hopes to work on many styles and genres of projects.

## MARIA MOGOLLON - ENSEMBLE (DEER/YEARLING, ELF)

Maria is from Colombia, and is excited to be a part of *Rudolph*! It is a unique experience, and it is a significant event for her. In the beginning, she was a little shy, however, she improved her skills gaining confidence in each rehearsal. Although she is only nine years old, her personality is incredible. She is an empathetic and charismatic leader, and is passionate about the arts. Maria loves singing, dancing, acting, cooking, and reading.

## NORA KEITH - ENSEMBLE (ELF, PRANCER)

Nora is so excited to be a part of this exciting Christmas musical. She is 12, and currently in the seventh grade. This is her first time doing theatre. Nora has been dancing since she was three. She is now a pre-competitive dancer, and performs numbers in tap, jazz, and lyrical. Nora loves winter, and skis in her spare time. She has loved being a part of this group, and can't wait to bring each character she plays to life!

## CLAIRE LAFORTUNE - ENSEMBLE (ELF, SLED-PUPPY)

Claire is very excited to make her musical debut in SPG's *Rudolph the Red-Nosed Reindeer*. She is in grade three, and can always be found singing and dancing. The opportunity to combine her two loves while being one of Santa's elves has been a magical experience for Claire. She hopes you enjoy the show, and that it brings the same magic of Christmas to you!

## DARÉANE LÉFEBVRE - ENSEMBLE (ELF)

Daréane is thrilled to be a part of *Rudolph*! Enjoy the show!





SUDBURY PERFORMANCE GROUP PRESENTS

The  
**Miss Magnolia  
Senior Citizen  
Beauty Pageant**

Play by Leslie Kimbell

A DINNER THEATRE PRODUCTION

January 2024 | Tickets on Sale Now | [sudburyperformance.ca](http://sudburyperformance.ca)



*Helvi's Catering*  
Homestyle cooking with the gourmet touch

Business Location: 2 Black Lake Road, Lively, ON  
Phone: 705-692-9081



Sudbury Performance Group Presents

# NO FENCES

A new musical of Northern Ontario  
by local playwright Andy Lowe


February 2024 | Tickets on Sale Now

COMING Season 2024-2025, Sudbury!

*Simply the best:* THE BEST OF  
*Tina Turner*

A theatrical concert spanning the life and  
career of the Queen of Rock and Roll.

A Sudbury Performance Group Production



SUDBURY PERFORMANCE GROUP PRESENTS

# SUMIT SWAMI

FEBRUARY 24, 2024

Doors 5:00 p.m. | Show 7:30 p.m.  
Trevi Bar & Grill – 1837 LaSalle Blvd.  
General Admission \$35 | VIP \$55




[@sumitswami\\_live](https://www.instagram.com/sumitswami_live)

**SUDBURY PERFORMANCE GROUP**  
705-662-8518  
sudburyperformance.ca

LIVE STAND-UP  
**COMEDY**

**Delto**  
THEATRE

Reserved Seating: To ensure your group sits together, you must contact the Trevi to let them know the number of people in your group (705-560-0700).



**You'd be nuts  
if you went  
anywhere else!**



Media Concepts

[www.mediaconcepts.ca](http://www.mediaconcepts.ca)

logos | print design | photography | video  
logos | design et impression | photographie | vidéo



**Steve Mahaffy**  
Sales Consultant

Mobile 705.698.3950  
[stevemahaffy@thecarlot.ca](mailto:stevemahaffy@thecarlot.ca)  
[www.thecarlot.ca](http://www.thecarlot.ca)



**THE CAR LOT**  
ETC.

2231 Lasalle Boulevard, Sudbury, ON, P3A 2A9



**B & D QUALITY MEATS**

SUDBURY, ONTARIO

A PROUD PARTNER OF  
**SUDBURY  
PERFORMANCE  
GROUP!**

594 Lasalle Blvd  
Sudbury, ON P3A 1W9  
Phone: (705) 560-5504



**PROUD TO SUPPORT  
SUDBURY PERFORMANCE GROUP**

WORKING TOGETHER TO BRING LIVE MUSIC TO  
AUDIENCES EVERY THURSDAY FROM 6:30- 9:30!

**WE ALSO DO CATERING!**

**1837 LASALLE BLVD. | (705) 560-0700**

**sudbury.com**

Your community. Your news.

*Proud supporter of  
Sudbury Performance Group*

Financial Decisions Inc. is a full service independent financial planning and investment dealership operating out of the former Barry family pioneer residence at 1546 Bellevue Avenue, just behind the Bancroft Centre building at the corner of Bancroft Drive in downtown Minnow Lake.



**(705) 525-7526 | [financialdecisions.ca](http://financialdecisions.ca)**

**REAL  
ESTATE  
AGENT**  
with Lacelle  
Group Realty



**Kristen Mahon**

(249) 979-1369

kristen@lacellegroup.com

[ **THE PLUS FACTOR** ]

SERVING WOMEN FROM SIZE SMALL TO 3X

**15%  
OFF**

when you bring in this coupon

**HAND PICKED CLOTHING / PURSES / JEWELRY ETC.**

774 LASALLE BLVD. / MONTROSE MALL

**WWW.THEPLUSFACTOR.CA**







ROAL DAHL'S

# MATILDA

THE MUSICAL



NOVEMBER 24 - DECEMBER 17, 2023  
THE SUDBURY THEATRE CENTRE

A PROUD  
SUPPORTER  
OF THE ARTS  
IN SUDBURY

BREAK  
A LEG!



restaurant · pub

## Fionn MacCool's®

established 1996

1877 REGENT ST., SUDBURY, ON P3E 3Z7 ♦ 705-522-8827

*We've Moved!* Visit us at 1885 Lasalle Boulevard, Sudbury!

*True or False?* These 8 photos are all of the same woman...



*- Short, Long, Straight, Curly -*

**We have many colours and styles to suit your needs!**

*What we carry:*

- Wigs (1000+ in stock)
- Top Pieces (permanent + clip-in)
- Headwear (during chemo)
- Eyebrows (powders + stencil kits)

*Never considered a wig? Consider this...*

- Vacation? Hair in an instant!
- Convenience if you're rushed for time!
- In-Between Colours? Hide those roots!
- Date Night? Add Excitement!
- New Style/Colour? No commitment!

*Need a wig for any of the following reasons?*

**It's tax deductible! Your insurance may cover it!**

Chemo/Radiation Treatment • Trichotillomania (Tric) Hair Pulling Disorder  
Female Pattern Baldness • Thinning • Surgery Causing Hair Loss • Alopecia  
Any Reason Causing Hair Loss or Thinning



*True!* Jo-Anne is wearing 8 different fabulous looks!

**By Appointment - Same day is often available. Monday – Saturday**

**705-222-9447 | 1-866-370-5595**

**1885 Lasalle, Sudbury** (across from Food Basics)

# Bradley Lecour CPA

1064 Lasalle Boulevard,  
Sudbury, Ontario, P3A 1X9

T: 705 560 7444 | F: 705 560 9173

TF: 800-308-8707

Email: [brad.lecour@sympatico.ca](mailto:brad.lecour@sympatico.ca)

*Providing auditing,  
accounting and taxation services.*

**PROUDLY SUPPORTING SUDBURY PERFORMANCE GROUP!**



SUDBURY  
EVENTS CENTRE

**LOOKING FOR A HALL TO HOST YOUR SPECIAL EVENT?  
LOOK NO FURTHER THAN THE SUDBURY EVENTS CENTRE.**

**Contact 705-662-8518 for more information!  
19 Regent St, Greater Sudbury**

WHAT DO YOU NEED  
**PRINTED?**



309 Douglas Street, Sudbury • 705.673.7127

**[journal-printing.com](http://journal-printing.com)**