

# PROGRAMME

SUDBURY PERFORMANCE GROUP

— *Be a Part of the Art* —

# NO FENCES

A new musical about Northern Ontario  
by local playwright Andy Lowe



A proud part of Sudbury Performance Group's Northern Arts Festival 2024



**SUDBURY PERFORMANCE GROUP PROUDLY PRESENTS**

# **NO FENCES**

**A NEW MUSICAL ABOUT NORTHERN ONTARIO**

From Pikin' in Killarney to the Burwash Train to the Georgian Bay Blues, no other singer/songwriter tells the tales of our Northern Ontario neck of the woods quite like Andy Lowe. Andy is a singer/songwriter/entertainer who has called Sudbury his home for the last 35 years. He has been a mainstay at venues like Peddler's and Fionn MacCool's and was the resident summer entertainer at the Killarney Mountain Lodge for 20 years. He has written and recorded over 30 songs celebrating the Sudbury, Killarney and Manitoulin area. Now, he and Sudbury Performance Group have put his collective 35 years of work into a new musical production, No Fences. Set around a campfire in the North, audiences will fall in love with Northern Ontario all over again as together, Andy and Sudbury Performance Group sing the songs of our home!

**Director** – Andy Lowe

**Vocal Director** – K.C. Rautiainen

**Stage Manager** – Jocelyne Lehto

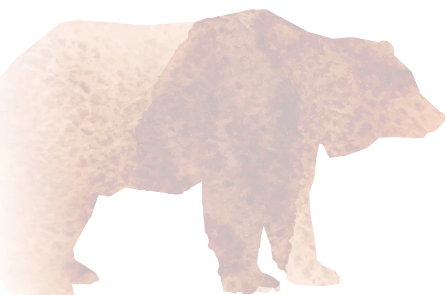
**Choreographer** – Sarah Tyler

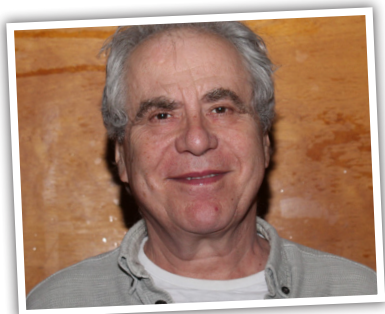
**Assistant Stage Manager** – Riley Quesnel

**Sound Technician** – Sean Perras

**Lighting Design** – Andre Labelle

**Cast Photography** – Heather Hodgkinson





## ANDY LOWE – DIRECTOR

We live in a very special place, and it shapes our character. Those epic rock cuts on Highway 400 proclaim our strength and determination, whilst opening a path of welcome to visitors from the South. Like our landscape, we are rugged but graceful, hardy yet hospitable, diverse and individual, yet somehow all getting along together.

The performers of this show are opening their Northern hearts to you—hearts as big as our boundless skies—to sing you songs and lift your spirits and remind you that there is no place like home.

## – PLAYWRIGHT

*No Fences* marks Andy's return to theatre after a lengthy absence. As a playwright, he has had a handful of shows produced by local theatres. *Through Crystal Spectacles* was presented by Rainbow Theatre, Parry Sound, in 1984. *Just A Song at Twilight*, and *One Hit Wonder*, were both performed at the Burns Wharf Theatre, Manitowaning. He has produced shows for Theatre-in-Education tours. Andy was the resident entertainer at the Killarney Mountain Lodge for 23 years, and has written over thirty songs that celebrate our way of life here in the mid-north. He directed *Romeo & Juliet* for Theatre Cambrian, and directed three productions for the STC Young(ish) Company, including *Alice's Adventures in Wonderland*, which he also adapted.

## JOCELYNE LEHTO – STAGE MANAGER

Jocelyne's passion for acting ignited during various high school drama club productions, propelling her to contribute backstage at Take Two Theatre in Timmins, and enroll at MAS Acting Studios. Diligently honing her craft, she secured roles in a range of film and television productions. A defining moment in her career unfolded at the 2018 Toronto International Film Festival (TIFF), where she graced the big screen as Joy in Ingrid Veninger's *Porcupine Lake*. This experience marked a pinnacle

in her acting journey. Further showcasing her versatility, she delivered standout performances as Millie Michaels and Beth Hollender in Porchlight Theatre Company's production of *California Suite*. This upcoming production signifies a thrilling new chapter in her narrative, seamlessly blending her passion for storytelling, acting, and the vibrant energy of the theater. Excitement and humility fill her as she collaborates with a talented and dynamic group of peers who share her unwavering passion.



**VOLUNTEERS  
NEEDED**

Sudbury Performance Group would love for you to "be a part of the art"!

**VOLUNTEER WITH US!**

**SUBMIT A VOLUNTEER APPLICATION FORM**

## K.C. RAUTIAINEN — VOCAL DIRECTOR

K.C. has been doing original harmony arrangements and vocal directing shows since 1990 for groups such as Theatre Cambrian, YES Theatre, and Sudbury Performance Group. Although she went into semi-retirement from working on musicals a year ago, she is thrilled to be a part of this brand-new piece by Andy Lowe. K.C. had the pleasure of singing back-up on Andy's CD, *A Sudbury Songbook*, released in 2000. She would like to thank Andy, the cast, the band, and crew for their hard work. So, what has K.C. been doing with all her free time? Well, K.C.'s two biggest passions are seeing animals thriving in the wild, and working with injured and orphaned wildlife around the world. Next up is a safari that will take her through Kenya and Tanzania. *Bôle!*



## SARAH TYLER — CHOREOGRAPHER

Sarah is currently in her final year of attending Laurentian University to obtain a Master of Architecture degree. While studying in Sudbury, she competed with Laurentian's Voyageurs Dance Team. Her love of dance began when she was three years old, and she has been dancing competitively since she was seven. In her spare time, she has been volunteering with SPG, and has had roles in a few of SPG's previous productions. Sarah is honoured to have been choreographer for this production. She'd like to thank the cast for their

hard work and dedication, and Andy for writing a great musical, as well as the production team for all their efforts! To the rest of the cast and crew: Break a leg!



SUDBURY PERFORMANCE GROUP PRESENTS

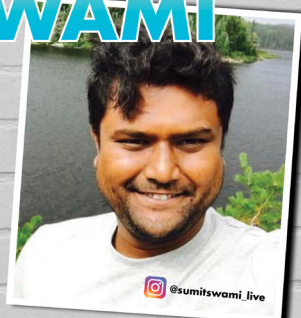
# SUMIT SWAMI

FEBRUARY 24, 2024

Doors 5:00 p.m. | Show 7:30 p.m.  
Trevi Bar & Grill – 1837 LaSalle Blvd.  
General Admission \$35 | VIP \$55

SUDBURY  
PERFORMANCE  
GROUP

705-662-8518  
sudburyperformance.ca



LIVE STAND-UP  
COMEDY



Reserved Seating: To ensure your group sits together, you must contact the Trevi to let them know the number of people in your group (705-260-0700).



## ADRIENNE YOUNG — RED

Adrienne is thrilled to be a part of this production, and is playing the role of Red. She is 13 years old, and has a passion for singing and theatre. Adrienne is no stranger to the stage, as she has performed in numerous shows with multiple theatre groups around the city of Sudbury since the age of eight. Recently, she played *Rudolph the Red Nosed Reindeer* with SPG, and Mary Warren in Author Miller's *The Crucible*, with Porchlight Theatre Company and SPG. She is grateful to all her friends and family for their love and support, and would like to thank

Sudbury Performance Group and Andy Lowe for this opportunity. Enjoy the show!

## MAIJA MCCAHERY — YVES

This will be Maija's fourth performance in Sudbury, since moving from Mount Forest, Ontario, in March of 2022. Originally born in Sudbury, she moved away at seven, and has now returned as an adult. She had renewed her love of theatre in 2015, when she joined the Grey Wellington Theatre Guild in Harriston, Ontario, as a performer and a board member. She has performed in over six community performances pre-Covid, and is back at it again, and loving the connection with the vast

arts community in Sudbury. Maija's most recent performance delighted

and touched the hearts of children, as she played Sam, the Snowlady storyteller, in *Rudolph the Red Nosed Reindeer*. She will be showcasing her storytelling talent, after *No Fences* concludes, in support of SPG's Northern Arts Festival at the South End and Lively Libraries, on Saturday, February 17<sup>th</sup>. She has thoroughly enjoyed working with Andy Lowe and her cast mates, to bring to life this unique and original production. Since she has always secretly wanted to host her own public karaoke event, the role of Yves, the MC of the trailer park, is a perfect fit! Maija hopes you will enjoy this performance immensely!



## MARGARET KAMERMAN — JODY

Margaret is very excited to be a part of *No Fences*! This is Margaret's second production with Sudbury Performance Group, and she is excited to share her singing expertise on the stage in this wonderful production, and bring to life the character of Jody, who is a lover of the outdoors and champion blueberry picker. Margaret was raised in Parry Sound, and began singing at an early age. She has recently moved back to Sudbury after completing her bachelor's degree in music from The Faculty of Music at Wilfred Laurier University in Waterloo. During her studies, she got the opportunity to perform with the Kitchener-Waterloo Symphony as part of the chorus for a concert

production of Verdi's *La Traviata*. She played the role of Beth March in Opera Laurier's production of Mark Adamo's *Little Women*. Margaret works as a Mary Kay beauty consultant when not on the stage. She also enjoys reading, photography, traveling, and spending time with family and friends.



## CAITLIN DROHAN – DREW

Caitlin made her Sudbury debut in September by portraying Susanna Walcott in *The Crucible*, with Porchlight Theatre Company in partnership with SPG. Her most recent role was Mrs. Claus, in *Rudolph the Red Nosed Reindeer*, with SPG. She was previously Cinderella, and played the role of Audrey 2 in *The Little Shop of Horrors*, at New Star Theatre Company, in Ottawa. Caitlin assisted with makeup and costumes for *The Little Mermaid* and *The Wizard of Oz* with NSAA, located in Kingston.



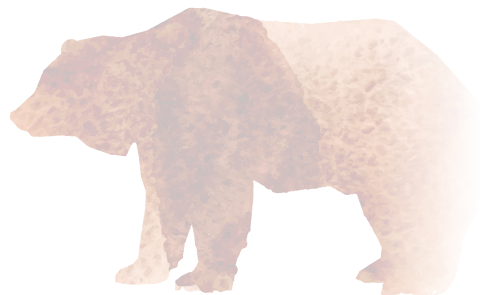
## SATINE STANFIELD – JESSIE

Portraying Jessie, one of the Canada-obsessed, American tourist sisters, Satine is thrilled to find herself back on stage for the second time! She was previously in SPG's *Rudolph the Red Nosed Reindeer*, as Fireball/ Spotted Elephant. She is so excited to celebrate her hometown and province through the wonderful songs of the wonderful Andy Lowe, and she hopes you love the show just as much as Jessie loves Canada! It's beauty, eh?



## LIBBY MICHIE – MEL

Libby is thrilled to be playing Mel in Sudbury Performance Group's production of *No Fences*. Libby spent lots of time camping at provincial parks with her family while growing up, so she is very excited to be able to bring her childhood memories of the rocks and trees to life with these songs. Libby would like to give a special thanks to Andy, for letting her be a part of such a beautiful show! She would also like to give a huge shoutout to the cast, crew, and band, for putting so much time and dedication into the production. She invites you all to "grab your fiddle, pick some strings," and enjoy the show!





## KYLEE BYNE – JO

A professional science communicator and an amateur podcast enthusiast, Kylene is passionate about telling stories in any form. They grew up spending their summers on the Island, and hopes her yodeling does her Haweater family proud! She's excited to be joining this incredibly talented cast to celebrate Northern Ontario in all its forms!

## CALLUM ARNOLD – KELLY

A writer, musician, and actor from Elliot Lake, Ontario, Callum portrays the role of Kelly in *No Fences*. Callum is performing for the first time (and hopefully not the last!) with SPG. Callum recently graduated from the University of Ottawa, and previously acted with Elliot Lake's own community theatre in a production of *Shorthanded*, by Michael Grant. A lifelong performer, Callum wants to thank the talented cast and crew of *No Fences* for their camaraderie, and friends and family for their unwavering support.



## DAMARA MOXAM – DANA

Damara is a queer high school student who devotes their time to theatre and studies. Damara is so excited to work with the incredible cast of *No Fences*. Like the character they play, they are non-binary and gothic. They play Dana, a rough type of hockey fan. They are so grateful for the opportunity to be a part of this show, whether it's singing about the Sudbury Wolves, or making your way back home. Enjoy the show!

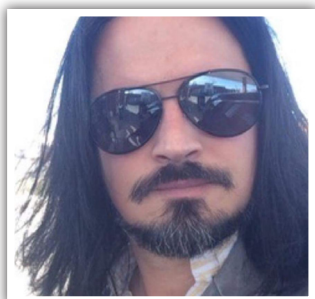
COMING Season 2024-2025, Sudbury!

## Simply the best: THE BEST OF Tina Turner

A theatrical concert spanning the life and career of the Queen of Rock and Roll.

A Sudbury Performance Group Production





## MEET THE BAND

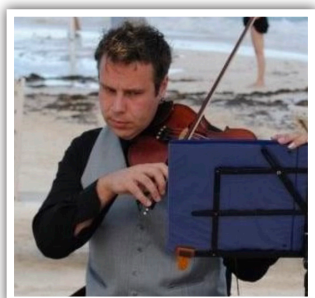
### SCOTT MITCHELL – GUITAR

Scott Mitchell Studied jazz guitar at LU for four years. He played guitar for Laurentian's jazz band, and singer/guitarist for the band Another Story, formerly My Band. He has written two albums now, for a total of 24 original songs. He also wrote another song, which was featured on the Tattoo Rock Album Contest (TRAC). He has been performing in Sudbury and throughout Northern Ontario for 24 years (since 2000), and has shared stages with Ashley McIsaac, Barney Bentall, Default, The Mudmen, and The 70s All-Star Band, to name a few.



### SARAH CRAIG – KEYBOARD

Tonight's keyboardist is Sarah Craig. Her main projects are 2 Violins Plus (Masotti and Schaak), and Sarah Craig Jazz Trio (Dardick and Begin). Sarah is a longtime contributor to the local music scene: vocalist, recording artist, music director, and private music instructor are some of the other hats she wears. Sarah sends a big congratulations to Andy Lowe, for the realization of this musical project!



### KAI SANTALA – FIDDLE

Kai Santala is a local musician from Lively, Ontario. He has experience playing violin in orchestral groups and local bands, as well as other musical productions in the hub of the North, Sudbury. With a Bachelor of Arts from the Laurentian and Cambrian music programs, Kai also plays multiple instruments, and enjoys sharing his love for music. Kai is pleased to be part of the *No Fences* production.



### RYAN PAQUETTE – BASS

Ryan Paquette has spent his entire life in Northern Ontario. Ryan enjoys playing music whenever the opportunity arises, whether that's playing gigs, or serenading his family around the campfire. Ryan is excited to be a part of this musical that celebrates life in this beautiful neck of the woods, our home in the North.



A PROUD  
SUPPORTER  
OF THE ARTS  
IN SUDBURY

BREAK  
A LEG!



restaurant · pub

Fionn MacCool's®

established 1996

1877 REGENT ST., SUDBURY, ON N3E 3Z7 ✦ 705-522-8827



Helvi's Catering  
Homestyle cooking with the gourmet touch

Business Location: 2 Black Lake Road, Lively, ON  
Phone: 705-692-9081

**REAL  
ESTATE  
AGENT**  
with Lacelle  
Group Realty



**Kristen Mahon**

(249) 979-1369

kristen@lacellegroup.com

[ **THE PLUS FACTOR** ]

SERVING WOMEN FROM SIZE SMALL TO 3X

**15%  
OFF**


when you bring in this coupon

**HAND PICKED CLOTHING / PURSES / JEWELRY ETC.**

774 LASALLE BLVD. / MONTROSE MALL

**WWW.THEPLUSFACTOR.CA**





**You'd be nuts  
if you went  
anywhere else!**



Media Concepts

[www.mediaconcepts.ca](http://www.mediaconcepts.ca)

logos | print design | photography | video  
logos | design et impression | photographie | vidéo



**Steve Mahaffy**  
Sales Consultant

Mobile 705.698.3950  
[stevemahaffy@thecarlot.ca](mailto:stevemahaffy@thecarlot.ca)  
[www.thecarlot.ca](http://www.thecarlot.ca)



**THE CAR LOT**  
ETC.

2231 Lasalle Boulevard, Sudbury, ON, P3A 2A9



**B & D QUALITY MEATS**

SUDBURY, ONTARIO

A PROUD PARTNER OF  
**SUDBURY  
PERFORMANCE  
GROUP!**

594 Lasalle Blvd  
Sudbury, ON P3A 1W9  
Phone: (705) 560-5504



**PROUD TO SUPPORT  
SUDBURY PERFORMANCE GROUP**

WORKING TOGETHER TO BRING LIVE MUSIC TO  
AUDIENCES EVERY THURSDAY FROM 6:30- 9:30!

**WE ALSO DO CATERING!**

**1837 LASALLE BLVD. | (705) 560-0700**

**sudbury.com**

Your community. Your news.

*Proud supporter of  
Sudbury Performance Group*

Financial Decisions Inc. is a full service independent financial planning and investment dealership operating out of the former Barry family pioneer residence at 1546 Bellevue Avenue, just behind the Bancroft Centre building at the corner of Bancroft Drive in downtown Minnow Lake.



**(705) 525-7526 | [financialdecisions.ca](http://financialdecisions.ca)**

*We've Moved!* Visit us at 1885 Lasalle Boulevard, Sudbury!

*True or False?* These 8 photos are all of the same woman...



*– Short, Long, Straight, Curly –*

**We have many colours and styles to suit your needs!**

*What we carry:*

- Wigs (1000+ in stock)
- Top Pieces (permanent + clip-in)
- Headwear (during chemo)
- Eyebrows (powders + stencil kits)

*Never considered a wig? Consider this...*

- Vacation? Hair in an instant!
- Convenience if you're rushed for time!
- In-Between Colours? Hide those roots!
- Date Night? Add Excitement!
- New Style/Colour? No commitment!

*Need a wig for any of the following reasons?*

**It's tax deductible! Your insurance may cover it!**

Chemo/Radiation Treatment • Trichotillomania (Tric) Hair Pulling Disorder  
Female Pattern Baldness • Thinning • Surgery Causing Hair Loss • Alopecia  
Any Reason Causing Hair Loss or Thinning



*True!* Jo-Anne is wearing 8 different fabulous looks!

**By Appointment - Same day is often available. Monday – Saturday**

**705-222-9447 | 1-866-370-5595**

**1885 Lasalle, Sudbury** (across from Food Basics)

# Bradley Lecour CPA

1064 Lasalle Boulevard,  
Sudbury, Ontario, P3A 1X9

T: 705 560 7444 | F: 705 560 9173

TF: 800-308-8707

Email: [brad.lecour@sympatico.ca](mailto:brad.lecour@sympatico.ca)

*Providing auditing,  
accounting and taxation services.*

**PROUDLY SUPPORTING SUDBURY PERFORMANCE GROUP!**



SUDBURY  
EVENTS CENTRE

**LOOKING FOR A HALL TO HOST YOUR SPECIAL EVENT?  
LOOK NO FURTHER THAN THE SUDBURY EVENTS CENTRE.**

**Contact 705-662-8518 for more information!  
19 Regent St, Greater Sudbury**

WHAT DO YOU NEED  
**PRINTED?**



309 Douglas Street, Sudbury • 705.673.7127

**[journal-printing.com](http://journal-printing.com)**